

# Throttle Position Sensors – TPS346 and TPS347

**Situation:** Circuit board damage caused by repetitive movement of contact fingers leads to vehicle hesitation; vibration from diesel engine accelerates component wear.

## **Solution: Wells Advantage**

Using Hall Effect integrated circuitry, Wells engineers designed TPS346/347 with sophisticated non-contact sensors to eliminate wear issues associated with OE designs. This problem-solving approach extends product life and eliminates vehicle hesitation.

TPS346/347 fit Dodge Ram 2500 and 3500 diesel vehicles, model years 1998-2007. The OE part is sold with a bracket, which dramatically increases repair cost. Because the bracket rarely needs to be replaced, Wells provides a more cost-effective option by offering the sensor without the bracket.

## **Repair tips:**

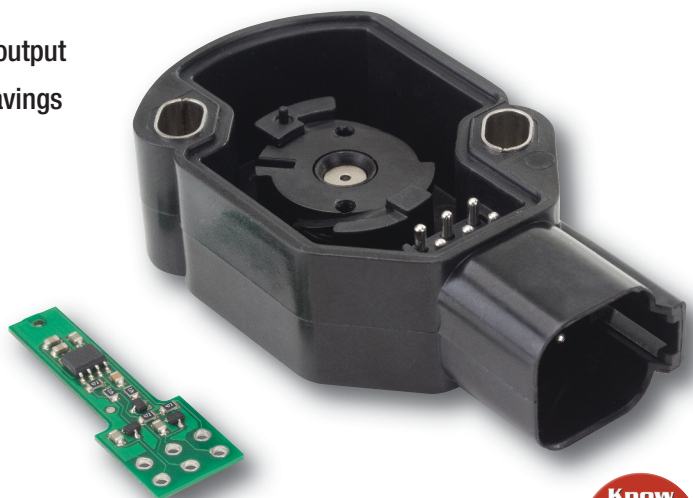
- Installation with or without the bracket requires calibration. For proper installation, follow directions on reverse side of this sheet.
- Test throttle position sensors with voltage moving through the circuit to reveal the parts' true operating characteristics.
- For best results, test throttle position sensors with a lab scope or voltmeter. Non-contact sensors cannot be tested with an ohmmeter.

## **Features:**

- Hall Effect integrated circuitry replaces failure-prone mechanical contact fingers and ink traces in original design
  - No wear points in the circuitry
  - More accurate and consistent electrical output
- Sensor sold without bracket for significant cost savings

## **Benefits:**

- Superior resistance to heat and vibration
- Longer component life
- Exceeds OE performance
- Precisely engineered for easy installation
- Increased customer satisfaction
- Comprehensive factory warranty



Visit us at - [www.wellsVE.com](http://www.wellsVE.com)

